

# ITCertMagic

ITCertMagic

HOME

ALL VENDORS

★ GUARANTEE

? FAQ

TESTIMONIALS

CART (0)



Try **PDF Demo** before you buy

### 28 Top Certifications

Apr

- ▶ HP CSE ▶ Avaya Specialist
- ▶ ACE InDesign ▶ LPIC Level1
- ▶ Apple Certified Pro ▶ VCP6-CMA
- ▶ JNCDA ▶ Aruba Certification ▶ CCA XP
- ▶ ICND1 ▶ RCSP ▶ GAQM LCP
- ▶ JNCDS-SEC ▶ Fireware Essentials
- ▶ Oracle Spatial 11g

### 28 Top Vendors

Apr

- ▶ ISM ▶ HRCI
- ▶ Palo Alto Networks ▶ NSCA
- ▶ SUN ▶ ISQI ▶ Huawei
- ▶ American College ▶ IIA ▶ ARM
- ▶ Pegasystems ▶ OMG ▶ Simens ▶ GRE
- ▶ HAAD ▶ PCI ▶ BBPSD ▶ SCO
- ▶ SugarCRM ▶ Logical Operations ▶ IIBA
- ▶ Altiris ▶ Alfresco ▶ AMA ▶ Informatca

### What Client's Say

“ There are some less than 8 new questions, so this 70-695 dump is still mostly valid. Wrote the exams today and passed. ”

Timothy ★★★★★

<http://www.itcertmagic.com/>

Pass-Guaranteed Certification Exam Questions | Exam Dumps - ITCertMagic

**Exam** : **070-398**

**Title** : Planning for and Managing  
Devices in the Enterprise

**Vendor** : Microsoft

**Version** : DEMO

**NO.1** A company has tablet devices that run Windows 10. You configure auditing for devices. You need to determine which audit policies are configured on the devices. What should you do?

- A.** At a command prompt, run the following command:auditpol
- B.** Run the following Windows PowerShell cmdlet:Get-AdminAuditLogConfig
- C.** At a command prompt, run the following command:Dsgget
- D.** At a command prompt, run the following command:Winrm
- E.** Run the following Windows PowerShell cmdlet:Get-AuditLogSearch

**Answer:** A

## **NO.2** HOTSPOT

A company integrates Microsoft Intune with System Center 2012 R2 Configuration Manager. The company uses Intune to manage Windows 7 and Windows 10 devices along with mobile devices. Users access company data by using iOS, OS X, Windows Phone, and Android devices. The company plans to use features of the Microsoft Enterprise Mobility Suite to increase user mobility and ensure data protection. All users must be able to run a custom 32-bit Windows app. The app cannot be migrated.

You need to ensure that the app is accessible from all devices.

In the table below, for each technology, identify which feature to implement.

NOTE: Make only one selection in each column. Each correct answer is worth one point.

Answer Area		
	Feature	Azure RemoteApp      App-V
	Support for iOS, Android, and Windows phone	<input type="radio"/> <input type="radio"/>
	Migrating apps	<input type="radio"/> <input type="radio"/>
	Support for running 32-bit Windows apps offline	<input type="radio"/> <input type="radio"/>
	Support for migrating Windows Installer apps to Universal app	<input type="radio"/> <input type="radio"/>
	Support for running offline software on OS X	<input type="radio"/> <input type="radio"/>

**Answer:**

**Answer Area**

<b>Feature</b>	<b>Azure RemoteApp</b>	<b>App-V</b>
<b>Support for iOS, Android, and Windows phone</b>	<input checked="" type="checkbox"/>	<input type="checkbox"/>
<b>Migrating apps</b>	<input type="checkbox"/>	<input type="checkbox"/>
<b>Support for running 32-bit Windows apps offline</b>	<input type="checkbox"/>	<input checked="" type="checkbox"/>
<b>Support for migrating Windows Installer apps to Universal app</b>	<input type="checkbox"/>	<input type="checkbox"/>
<b>Support for running offline software on OS X</b>	<input type="checkbox"/>	<input type="checkbox"/>

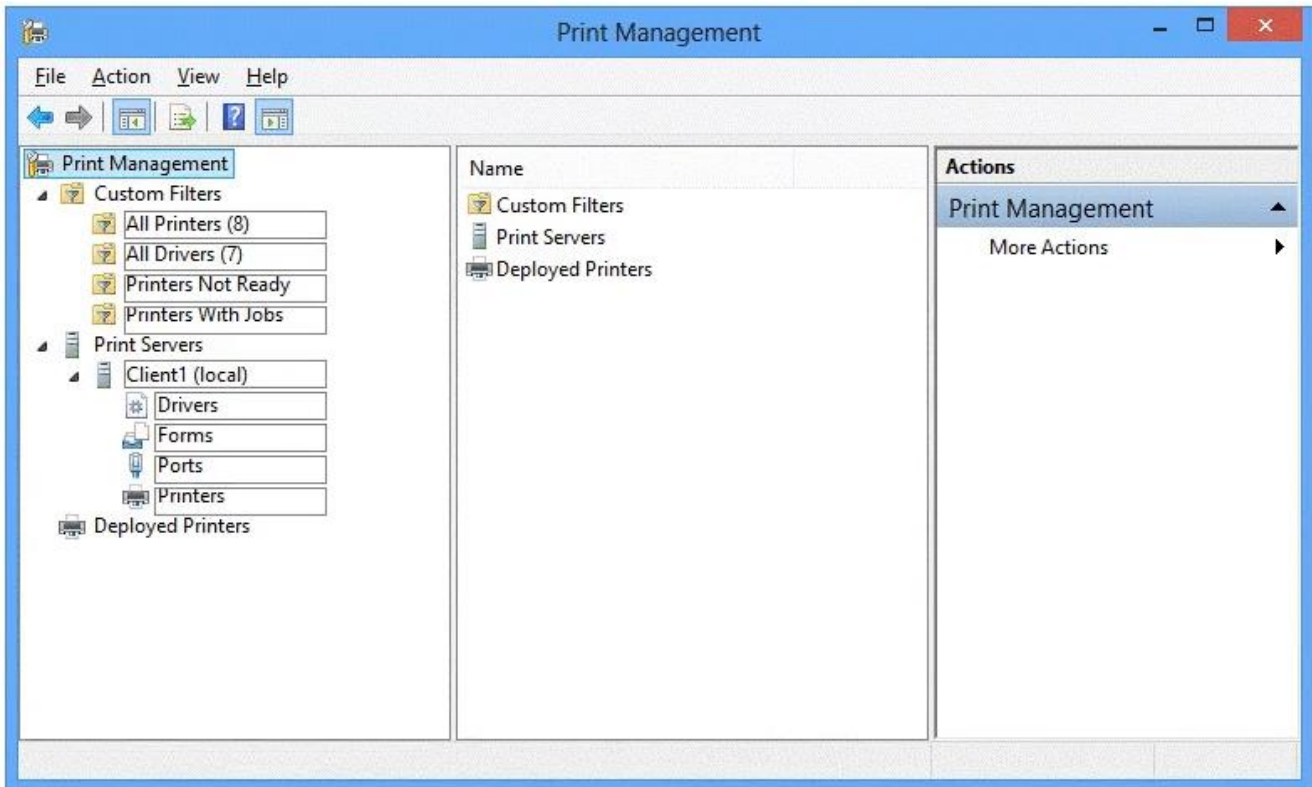
**NO.3 HOTSPOT**

You administer Windows 10 Enterprise computers in your company network, including a computer named Wst1. Wst1 is configured with multiple shared printer queues.

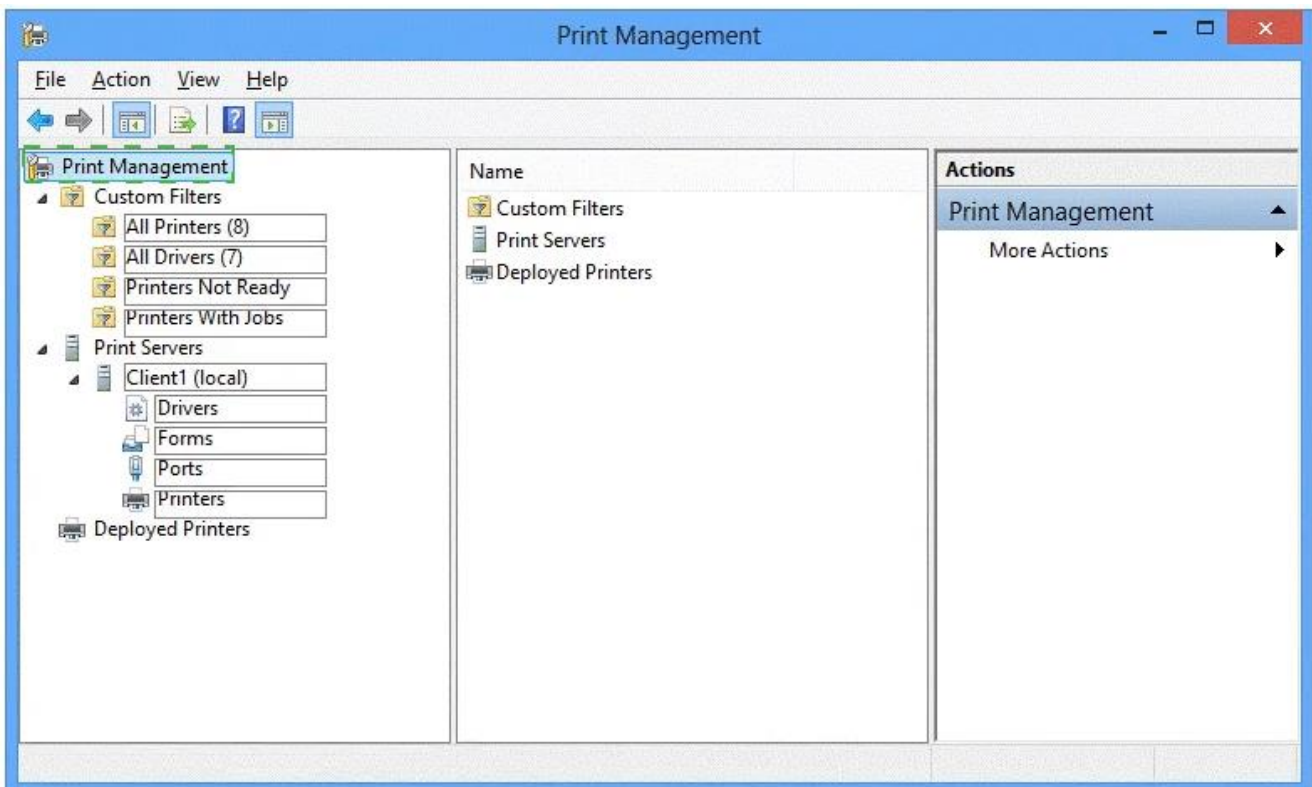
Wst1 indicates hardware errors. You decide to migrate the printer queues from Wst1 to a new computer named Client1.

You export the printers on Wst1 to a file. You need to import printers from the file to Client1.

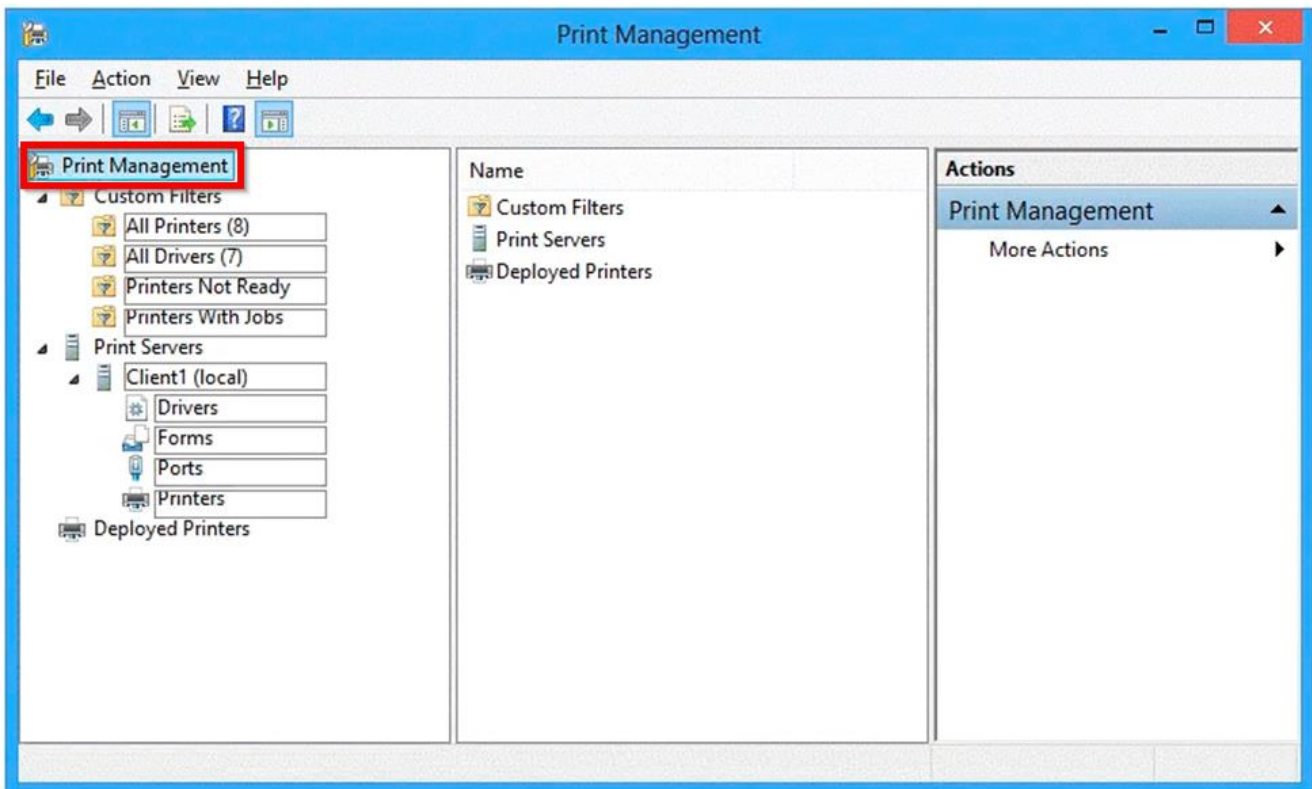
From the Print Management console, which Print Management node should you select? To answer, select the appropriate node in the answer area.



**Answer:**



**Explanation:**



We have exported the printers on Wst1 to a file. To import printers from the file to Client1, we use the Printer Migration Wizard.

Right-click Print Management, and then click Migrate Printers to open the Printer Migration Wizard. Select Import printer queues and printer drivers from a file, and select the export file. Then complete the wizard.

References: <http://blogs.technet.com/b/canitpro/archive/2013/06/17/step-by-step-install-use-and-remove-windows-server-migration-tools.aspx>

#### **NO.4** HOTSPOT

Your company upgrades a research and development department workstation to a Windows 10 Enterprise computer. Two of the workstation's folders need to be encrypted.

The folders are named C:\ProtectedFiles and C:\Backups.

You attempt to encrypt the folders. The output is shown in the following exhibit.

```

Administrator: Command Prompt

C:\>cipher /e /s:ProtectedFiles

Setting the directory ProtectedFiles to encrypt new files [OK]

Encrypting files in C:\ProtectedFiles\

Project1.zip      [OK]
Project2.zip      [OK]
Project3.zip      [OK]
Project4.zip      [OK]

5 file(s) [or directorie(s)] within 2 directorie(s) were encrypted.

Converting files from plaintext to ciphertext may leave sections of old
plaintext on the disk volume(s). It is recommended to use command
CIPHER /W:directory to clean up the disk after all converting is done.

C:\>cipher /e /s:Backups

Setting the directory Backups to encrypt new files [OK]

Encrypting files in C:\Backups\

Backup.zip        [ERR]
Backup.zip: The specified file is read only.
OldBackup.zip     [OK]

2 file(s) [or directorie(s)] within 2 directorie(s) were encrypted.

Converting files from plaintext to ciphertext may leave sections of old
plaintext on the disk volume(s). It is recommended to use command
CIPHER /W:directory to clean up the disk after all converting is done.

C:\>_

```

Use the drop-down menus to select the answer choice that completes each statement.  
NOTE: Each correct selection is worth one point.

#### Answer Area

The attempt to encrypt the ProtectedFiles folder and files [answer choice]

The attempt to encrypt the Backups folder and files [answer choice]

#### Answer Area

The attempt to encrypt the ProtectedFiles folder and files [answer choice]

- succeeded for all files and folders.
- succeeded for the files but not for the folder.
- will not finish until you run the command to clean up the disk.

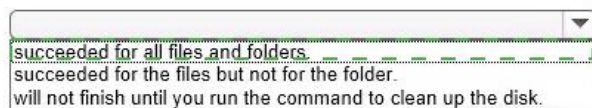
The attempt to encrypt the Backups folder and files [answer choice]

- failed to encrypt the files and folders.
- encrypted the folder but not the files.
- failed to encrypt one of the files but encrypted the folder and the other file.

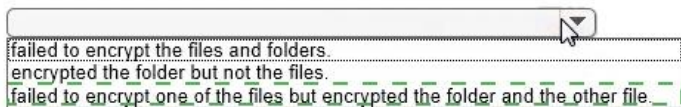
**Answer:**

**Answer Area**

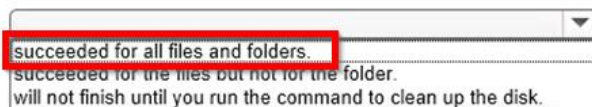
The attempt to encrypt the ProtectedFiles folder and files **[answer choice]**



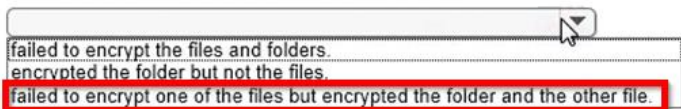
The attempt to encrypt the Backups folder and files **[answer choice]**

**Explanation:****Answer Area**

The attempt to encrypt the ProtectedFiles folder and files **[answer choice]**



The attempt to encrypt the Backups folder and files **[answer choice]**



We can see from the image below that all files and the ProtectedFiles folder were encrypted successfully (There are no errors and there is an [OK] message for each action).

```
C:\>cipher /e /s:ProtectedFiles

Setting the directory ProtectedFiles to encrypt new files [OK]

Encrypting files in C:\ProtectedFiles\
Project1.zip      [OK]
Project2.zip      [OK]
Project3.zip      [OK]
Project4.zip      [OK]
5 file(s) [or directory(s)] within 2 directorie(s) were encrypted.
```

The image below shows that the folder was encrypted successfully (Setting the directory Backups to encrypt new files [OK]).

The file Backup.zip failed to encrypt because the file is read only. The other file, OldBackup.zip was encrypted successfully.

```
C:\>cipher /e /s:Backups

Setting the directory Backups to encrypt new files [OK]

Encrypting files in C:\Backups\
Backup.zip        [ERR]
Backup.zip: The specified file is read only.
OldBackup.zip     [OK]
2 file(s) [or directorie(s)] within 2 directorie(s) were encrypted.
```

References: <https://technet.microsoft.com/en-us/library/bb490878.aspx>

**NO.5** You have a Windows 10 Enterprise computer.

The computer has a shared folder named C:\Marketing. The shared folder is on an NTFS volume. The current NTFS and share permissions are configured as follows.

Group name	NTFS permission	Shared folder permission
Everyone	Read and Execute	Read
Marketing	Modify	Full Control

UserA is a member of both the Everyone group and the Marketing group. UserA must access C:\Marketing from across the network. You need to identify the effective permissions of UserA to the C:\Marketing folder.

What permission should you identify?

- A. Full Control
- B. Read and Execute
- C. Read
- D. Modify

**Answer:** D

Explanation:

UserA is a member of both the Everyone group and the Marketing group and UserA must access C:\Marketing from across the network.

When accessing a file locally, you combine the NTFS permissions granted to your account either directly or by way of group membership. The 'least' restrictive permission is then the permission that applies.

In this question, the NTFS permission is the least restrictive of Read/Execute and Modify... so Modify is the effective permission.

When accessing a folder or file across the network, you combine the effective NTFS permissions (Modify in this case) with the effective Share permissions granted to your account either directly or by way of group membership (Full Control in this case). The 'most' restrictive permission is then the permission that applies. Modify is more restrictive than Full Control so Modify is the effective permission.

**NO.6** A company plans to deploy Outlook as a managed app to all users. You deploy Microsoft Intune.

You must deploy an internally developed iOS line of business (LOB) app to all users in the sales department. These users must only be able to share data between Outlook and the internally developed LOB app.

You need to configure the environment for sales department users.

What should you do?

- A. Configure a security policy that forces encryption.
- B. Use the Intune App Wrapping Tool to repackage the internally developed LOB application.
- C. Upload the internally developed LOB app to the Apple App Store. Deploy the app to all users in the sales department.
- D. Use the Intune App Wrapping Tool to repackage the Outlook application. Set the value for the App ID to match to Application ID of the internally developed LOB application.

**Answer:** B

Explanation:

References:

<https://docs.microsoft.com/en-us/intune/app-wrapper-prepare-ios>

**NO.7** DRAG DROP

A company plans to upgrade all devices from Windows 7 to Windows 10. All Windows 10 devices belong to an organizational unit (OU) named Desktops. All devices for users in the sales department are enrolled in Azure Active Directory (AD). All users belong to an OU named Employees. Users in the finance department must not be able to modify the power policy settings.

You need to apply the power policy.

What should you do? To answer, drag the appropriate option to the correct item. Each option may be used once, more than once, or not at all. You may need to drag the split bar between panes or scroll to view content.

Options	Answer Area
Active Directory	Item
Azure AD	Policy type
Computer-based group policy	Directory
Desktops OU	Target OU
Employees OU	
User-based group policy	

**Answer:**

Options	Answer Area
Active Directory	Item
Azure AD	Policy type
Computer-based group policy	Directory
Desktops OU	Target OU
Employees OU	
User-based group policy	